

# The Regional Outreach & Shared Care Program



## Impact report

for 2018-19

to The Sporting Chance Cancer Foundation

August 2019

## Acknowledgment

The PICS would like to acknowledge the Sporting Chance Cancer Foundation for their ongoing support for regional children, adolescents and their families managing a cancer diagnosis in Victoria. Without the generous assistance of the Foundation, many of the services and initiatives we have been able to deliver would not have been possible.





## Aim of report

The Sporting Chance Cancer Foundation continued their generous support of the Regional Outreach & Shared Care Program (ROSCP) in the 2018-19 financial year. This report provides an update on the program, including key achievements over the past year and an overview of priorities for 2019-20.

## Introduction

The ROSCP, an initiative of the Paediatric Integrated Cancer Service (PICS), facilitates shared care between the Children's Cancer Centres (CCC) at The Royal Children's Hospital (RCH) and Monash Children's Hospital (MCH), the paediatric services at Peter MacCallum Cancer Centre and Victorian regional shared care centres. The ROSCP requires agreement of responsibilities from all parties regarding education, mentoring and support, referral mechanisms, communication, infrastructure requirements and minimum standards of care.

The ROSCP continues to strengthen the quality, consistency and integration of cancer care throughout Victoria. The program is committed to the provision and support of ongoing education and mentoring needs for regional centres, allocating resources based on the activity and agreed scope of practice of the regional centre. Key components of the program include:

- Regional Health Service Executive endorsement
- Nurse Coordinator and Consultant support to facilitate shared care
- Dedicated onsite regional outreach clinics
- Expanding the use of assisted telehealth with paediatricians/ GP for regional families
- Education and mentoring for regional medical, nursing and allied health staff
- Communication strategies and consistent clinical guidelines to support safe regional shared care
- A family centred approach to program planning and evaluation.

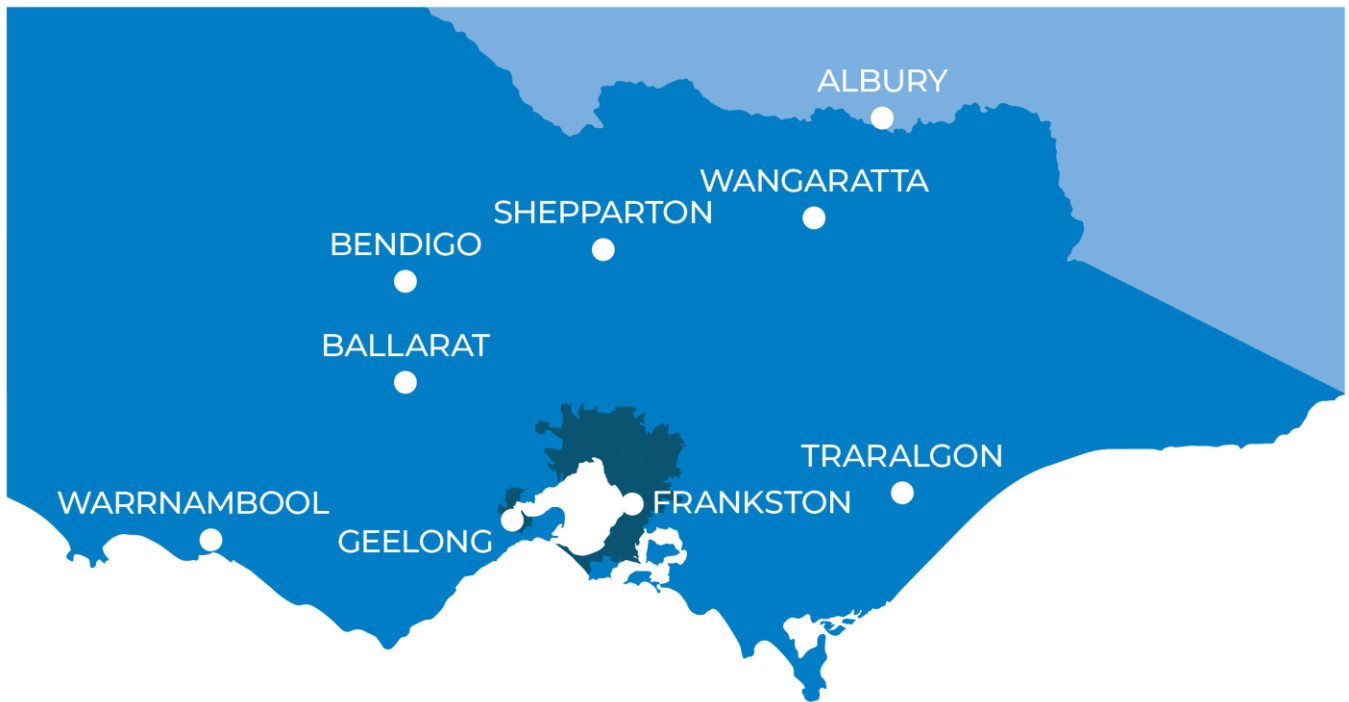
## Funding

The Sporting Chance Cancer Foundation continues to support the funding of the Bob Skilton Nurse and the Clinical Nurse Coordinator (Outreach). The Foundation also generously funded a new regional car for the program in 2018. The PICS funds the balance of staffing, operational costs of the car, and all education, goods and services expenses of the program.

## Staffing

The Bob Skilton Nurse continues to provide local support on the road by delivering regional clinics, program development and education in the shared care centres. The Regional Outreach Clinical Nurse Coordinator identifies patients eligible for shared care and attends clinical meetings, hand-over and ward rounds within the Children's Cancer Centres to ensure they have a thorough knowledge of the patients and their stage of treatment. The Coordinator acts as an advocate and safety net for the program, supporting children and their families to access services close to home.

## ROSCP shared care centres



The ROSCP continues formal shared-care partnerships with nine regional centres in Victoria, including:

- Albury-Wodonga Health (Albury Base Hospital)
- Ballarat Health Services (Ballarat Base Hospital)
- Barwon Health (University Hospital Geelong)
- Bendigo Health (Bendigo Hospital)
- Goulburn Valley Health (Shepparton Hospital)
- Latrobe Regional Hospital (Traralgon)
- Northeast Health Wangaratta
- Peninsula Health (Frankston Hospital)
- South West Health Care (Warrnambool Base Hospital).



## Benefits of the ROSCP

### For patients and families

- Improved coordination and streamlined care between the Cancer Centre and the regional centre.
- Clearer guidelines for families and the regional centre in making decisions regarding emergency care.
- Opportunity to receive services (such as chemotherapy, blood transfusions and antibiotics) closer to home.
- Opportunity to have outpatient consultations closer to home.
- Opportunity to participate in telehealth consultations with the local GP/Paediatrician and the RCH/MCH paediatric oncologist.
- Reassurance that the regional centre providing care to the child is working in partnership with the RCH/MCH, using agreed policies, procedures and clinical practice guidelines.
- Reduced travel, costs associated with traveling to Melbourne, time off work or school and time away from the family and home.

*“Thank you for organising (regional encounters) for us...it helps so much and makes life easier living in a country town” **Parent, Albury***

### For regional health professionals

- Better coordinated care and management of regional children and adolescents who receive shared cancer care between the RCH and MCH and their local health service.
- Access to CCC systems (shared electronic medical record, clinical practice guidelines and policies and procedures), thus supporting patient safety systems.
- Access to a range of learning opportunities (through education, clinical support and mentoring programs).
- Improved/greater access to paediatric oncology related resources.
- Improved support systems.
- Improved confidence of regional health professionals caring for children with cancer and their families.

*“Thank you for all the support and training in managing local chemotherapy and making this happen for our patients” **Regional Nurse, Bendigo***

*“Thank you for your continued support of children with cancer and their families in our area” **Regional Paediatrician, Geelong***



## For the primary treating centres

- Improved consistency in clinical practice with the regional centres, supporting standardisation of care and consistent service provision.
- Improved relationship with the regional centres.
- Implementation of formalised systems including adoption of statewide/RCH procedures, practices and clinical guidelines.
- Capacity improvement within day oncology and outpatients at the primary treating centre as patients are seen in alternate settings.
- Documentation of agreed communication pathways from paediatric wards and regional Emergency Departments, decreasing the stress and burden on both regional and CCC staff.

*“It’s always great to see kids coming to regional clinics or for their chemotherapy, dressed in their uniforms and ready for a day at school. That’s something they simply can’t do when they come to the city. The support we receive from SCCF is invaluable.”*

***Chris Williams, Bob Skilton Nurse***

## Achievements in 2018-19

In the 2018-19 financial year, there were **100** new diagnoses of childhood cancer in regional Victoria. There are currently **330** regional patients supported through the ROSCP across the nine shared care centres\*.

\*Data source: ROSCP Activity Dataset

### Regional outreach clinical activity

In 2018-19, the ROSCP supported the following services:



**176** regional clinical encounters, for **114** patients, at **17** regional outreach clinics



**86** regional chemotherapy encounters, for **19** patients



**336** telehealth encounters, for **113** patients across regional Victoria



**44** region-wide patient updates to each of our participating shared care centres



**250<sup>+</sup>** admissions to our regional shared care centers for supportive care

### Education

The ROSCP delivered education to medical and nursing clinicians across the nine shared care centres. Training included sessions around managing fever neutropenia, tumour lysis, central venous access devices, low-complexity chemotherapy, supportive care and oncology foundations day training.



**253** health professionals' attended **20** education sessions



**67** health professionals attended **5** regional medical information dinners

## Regional visits

The Bob Skilton Nurse Educator and Children's Cancer Centre Paediatric Oncologist regularly travel to the regional shared care centres.

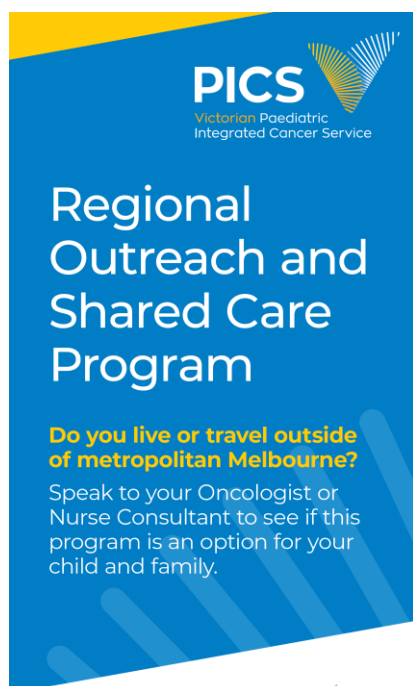


**35** trips to regional outreach centres to conduct clinics, education sessions and meetings to support new initiatives in regional services

The new SCCF regional car has so far travelled **13,000** kilometres

## Promoting the ROSCP to families

The program developed a brochure for newly diagnosed families.



Monash  
Children's  
Hospital



The PICS is a state-wide service coordinating regional outreach and shared care for children and adolescents with cancer treated at The Royal Children's Hospital and Monash Children's Hospital.



## International conference presentations

- Williams C. *Regional outreach: expanding capacity for telehealth in paediatric oncology care through a dedicated nursing role.* APHON Annual Conference & Exhibit, **September 2018**, Savannah GA, United States of America. Poster Presentation.





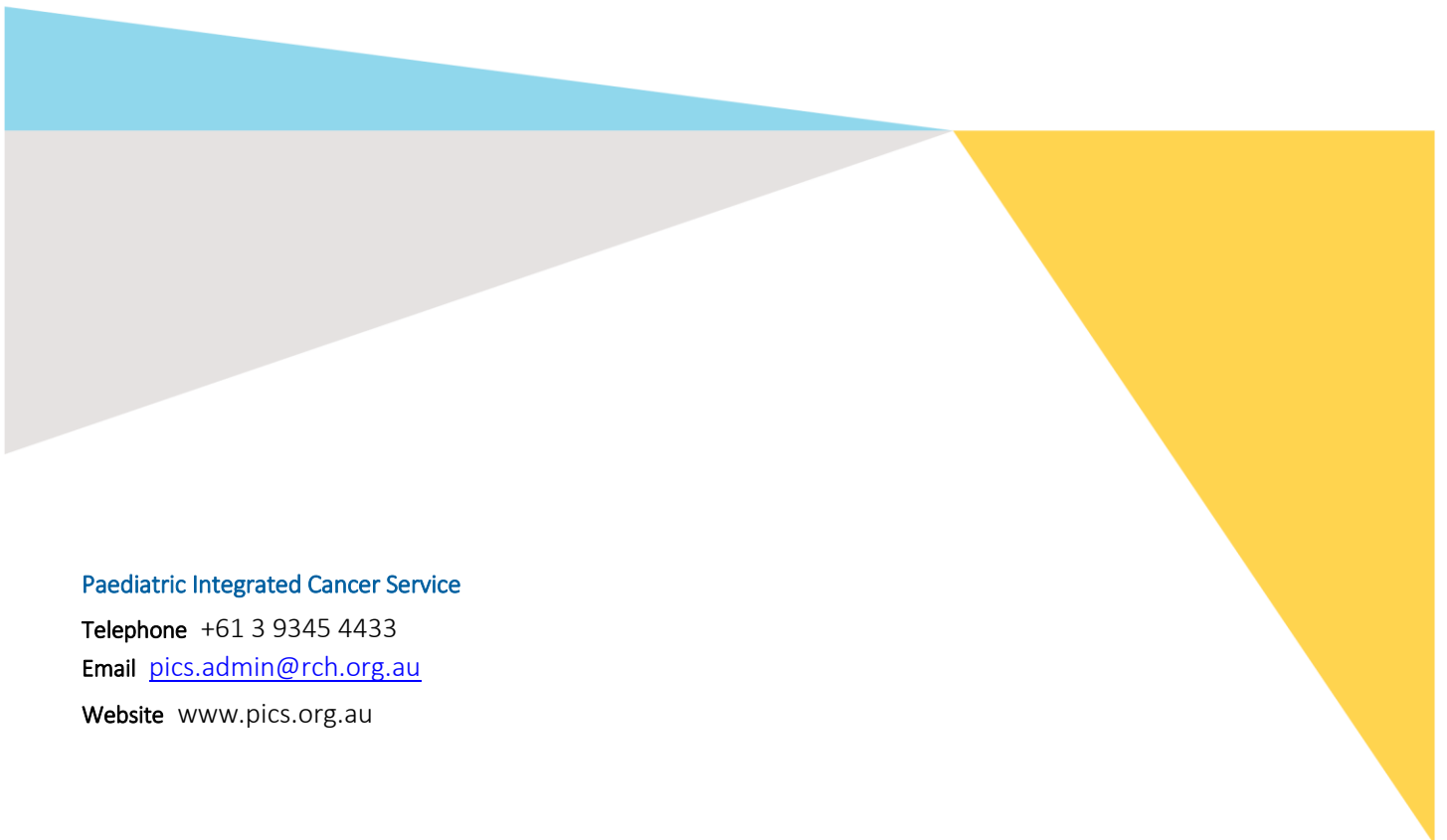
## 2019/20 initiatives

Further initiatives commenced and planned for the 2019-20 year include:

- Supporting the PICS Central Venous Access Devices (CVAD) project to ensure standardised clinical governance and education is rolled out across the state for the care of children and adolescents with CVADs
- Continuing to support education of paediatric oncology care in regional Victoria, particularly emergency care and supporting the training of new medical rotations in emergency services in regional Victoria
- Support the education and training for the new clinical trials for all leukaemia and lymphoma patients in 2020 that will be considered for regional shared care- this will be a significant increase in regional capacity-building and a great benefit to regional families
- Expanding the regional clinics to include more Long Term Follow-up services for survivors of childhood cancer
- Increased opportunity within the tertiary cancer services for the regional coordinator to engage with families at the time of diagnosis for education, support and advocacy.



The Paediatric Integrated Cancer Service (PICS) is supported by the Victorian Government.



**Paediatric Integrated Cancer Service**

Telephone +61 3 9345 4433

Email [pics.admin@rch.org.au](mailto:pics.admin@rch.org.au)

Website [www.pics.org.au](http://www.pics.org.au)