

Impact Report (Victoria): 2024-25

Bob Skilton Outreach Nurse

Sporting Chance Cancer Foundation
February 2026



A note of gratitude

The Sporting Chance Cancer Foundation (SCCF) has been committed towards helping children with cancer from regional Victoria for well over 15 years, and across Australia for more than 20.

Throughout this time, partnering with the Royal Children's Hospital (RCH) Foundation and the Victorian Paediatric Integrated Cancer Service (PICS), Sporting Chance has continued to fund the Bob Skilton Outreach Nurse, a nursing role that helps lead the Victorian PICS Regional Outreach Shared Care Program.

The ongoing commitment from SCCF has played a crucial role not only as a foundational supporter of the outreach program, but in the sustainability of a service that advocates and facilitates care close to home for regional children, and their families, at a particularly vulnerable time of their lives.

PICS and the RCH Foundation want to express our deepest gratitude to Patron Bob Skilton OAM, Victorian Director Rob Hines, CEO Jack Hughes and the support of the Sporting Chance Cancer Foundation and all of their committed donors over the years and into the future.

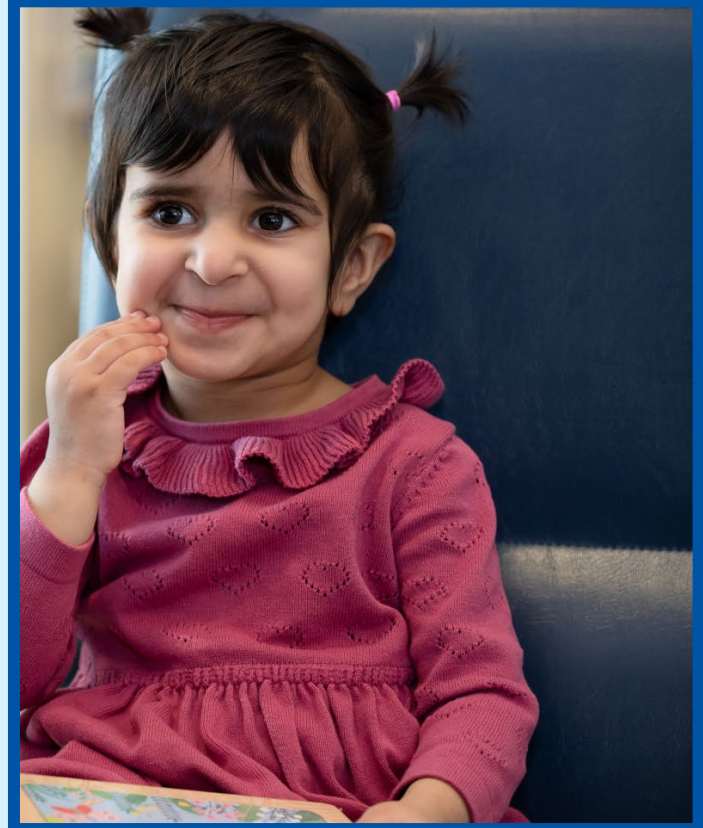
The regional outreach shared care program

Many children treated for cancer in Victoria live outside Melbourne, and face additional challenges in getting access to the care they need.

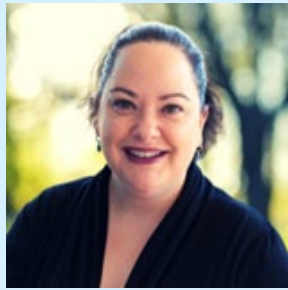
The PICS Regional Outreach Shared Care Program (ROSCP) helps provide care as close to home as possible, when appropriate and safe to do so.

The program facilitates care between the primary treating hospitals in Melbourne and nine regional partners across Victoria.

Through the Bob Skilton Outreach Nurse, the program delivers face to face education and training to our regional partners, and provides onsite children's cancer clinics throughout regional Victoria, bringing the cancer team to the family's hometown.



The regional outreach team supporting Victorian families



Nicole Sirianni
Nurse Consultant
(PICS)



Chris Williams
Bob Skilton Outreach
Nurse

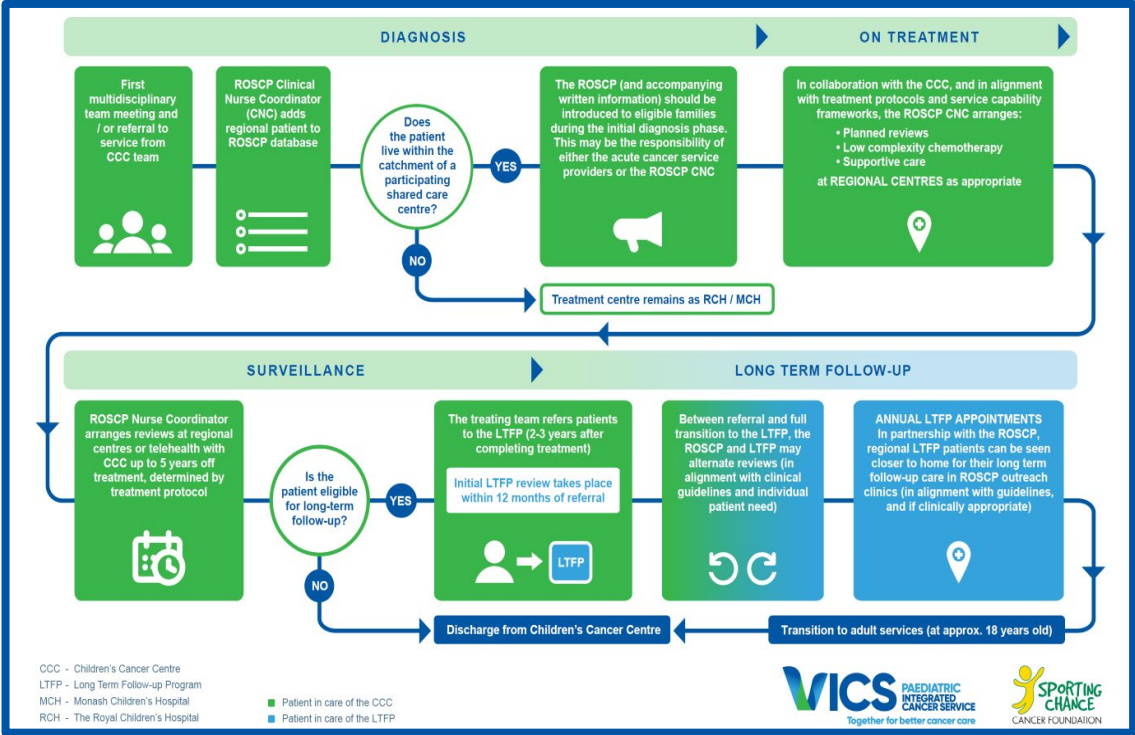


Imogen Riley
Nurse Consultant
(Albury)

Learn about the PICS outreach shared care program by scanning the QR code or at vics.org.au/pics/rosdp



The program helps coordinate care for children from diagnosis through to transition to adult care, across nine regional partners



Regional patient pathway



Participating regional partners

Staff are trained to provide many services locally to save travel

Services at shared care centres can include:



**Low-complexity
chemotherapy***



**Fever
Neutropenia**



**Other supportive
care services**



**Blood product
support**



**Central line
care**



**Nasogastric
tube care**



**Pathology
collection**

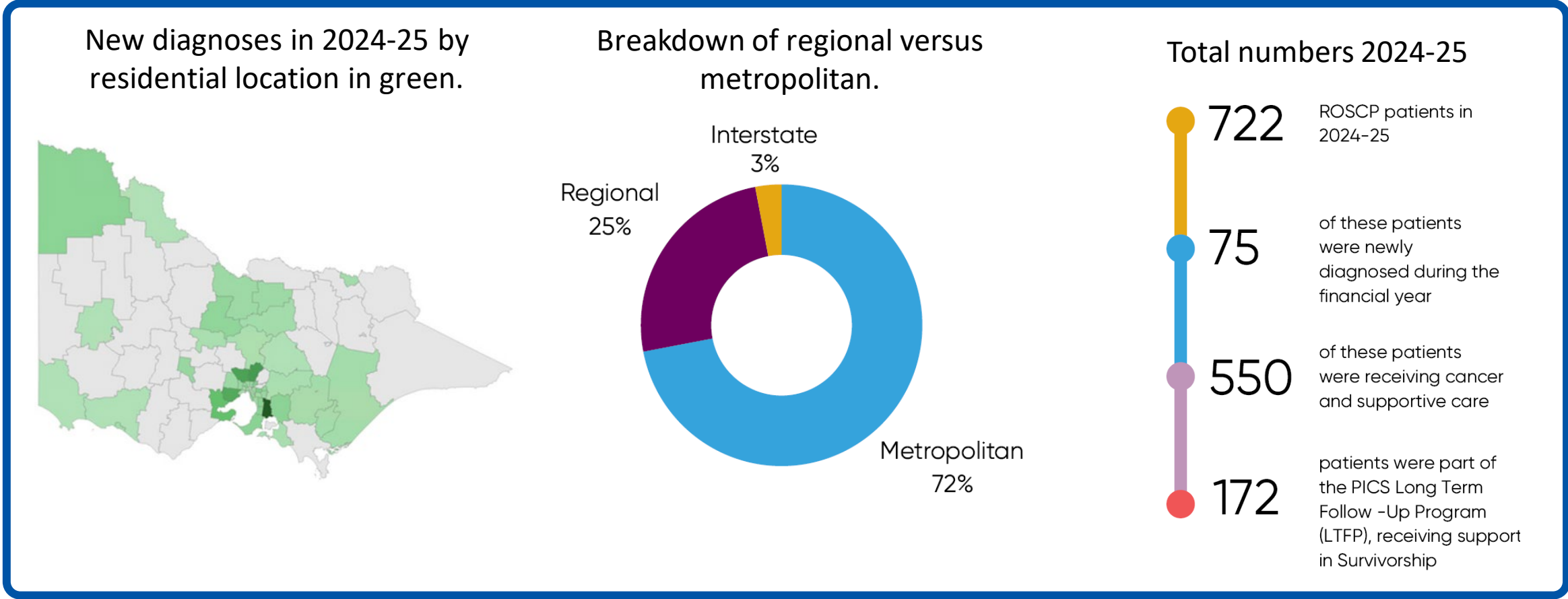
These may include:

- GCSF/Neulasta administration
- IV antibiotic therapy
- Acute pain management
- Management of acute nausea & vomiting
- Management of mucositis
- Vaccinations
- Management of chickenpox exposure

**Low-complexity chemotherapy is not available at Ballarat, Frankston, Traralgon, or Wangaratta.*

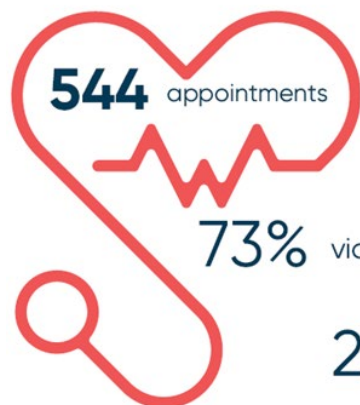
Impact: regional experience in 2024-25

Numbers have grown considerably. In 2014-15 there were 318 patients. Today, it's over 700



Impact: patient activity 2024-25

Children's cancer centre medical appointments in regional Victoria

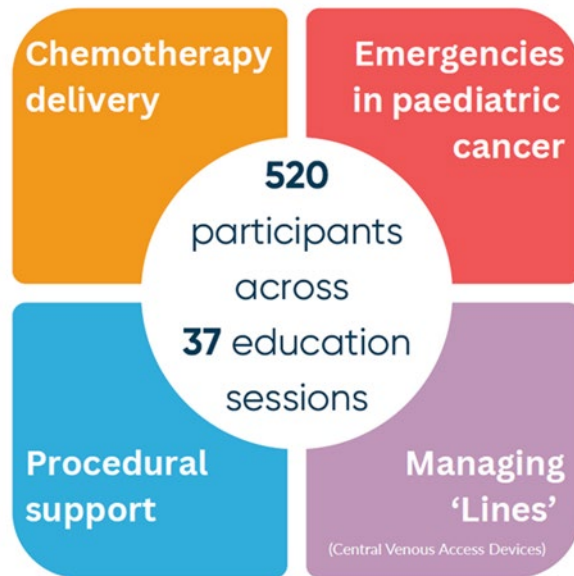


Breakdown:

- 165 families were seen in 22 dedicated outreach clinics with the Bob Skilton nurse and oncologist
- Over 100 were also with local paediatricians and GPs
- There were 41 chemotherapy encounters across 4 sites

Impact: education activity 2024-25

Education delivered by the Bob Skilton nurse, helping local teams provide great care.



Education delivered in 2024-25 included:

- emergency training to doctors and nurses
- training in managing procedural distress in children
- foundations in paediatric oncology nursing study days
- chemotherapy training
- medical training and orientation for paediatricians
- central line training
- medical information dinners to paediatricians
- local onsite updates to the health service partners

Impact: what does it mean for families

“Having appointments closer to home and even nursing care at home, has meant less travelling, less accommodation costs and overall less stress for our whole family. Most importantly, it has meant less time apart for our family and that is what really matters” -parent

“The program impacts lives in a lot of different ways that may not seem that much to some people...[but] its so much more to us. Thank you for giving us the chance to breathe again...it's more appreciated than I think you know”
-Amy's mum

“Every time we had to drive down to the RCH we'd have to be there by 9:00, so we'd have to leave at about 6:00 and it was a lot of travel. And if there was a complication or he needed a transfusion, it would be a really long day. We also had a young baby at the time, so it was much easier being able to be treated at home”

- Rowan's mum



Impact: what does it mean for health professionals

"I think it's really fantastic for us to upskill and for families to engage regionally and be able to stay at home.

- Regional Nurse

"Chris [Bob Skilton nurse] and Imogen [Albury nurse] have been fantastic! Thank you to the entire team for bridging the gap between regional centres like us with the gurus in metros"

-Regional Nurse Manager

"All children who live regionally should be engaged with the program so they can receive as much care as is feasible and safe closer to home"

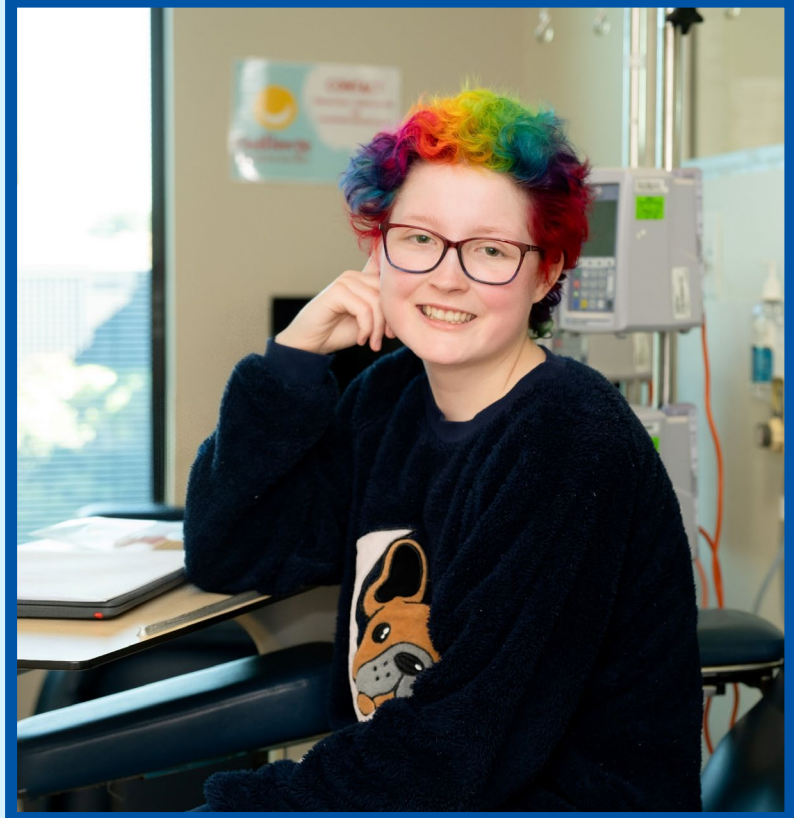
- RCH health professional



Impact: improving the experience for regional families

In 2026, we are delivering a new regional project that aims to:

- increase the number of families having care closer to home
- increase overall encounters of cancer care with our regional partners
- increase awareness, trust and engagement
- strengthen the program through clearer roles, processes and accountability
- improve and standardise care across all our regional partners
- expand local access to clinical trials for regional families
- review and expand regional education to continue to build the workforce
- use data to monitor and evaluate program performance, inform planning and drive continuous improvement



Supporting the Sporting Chance Cancer Foundation

We were delighted to assist the Foundation in late 2024 in the production of a promotional video that highlighted the work of the regional program and shared the experience of Melissa and her daughter Pippa, who kindly gave their time.

Their experience is a great example of how the philanthropic support of the Sporting Chance Cancer Foundation helps us achieve the goal of care close to home for all families experiencing a diagnosis of childhood cancer.

We look forward to working with SCCF into the future and to continue looking for opportunities to improve and increase our supports for regional families.



Scan the QR code to watch the video on the Sporting Chance Cancer Foundation Website

